

## The Robot Program Episode 004: Identify JD Shoulder Servos

If the stickers that label JD's shoulder servos have fallen off, this lesson will show you how to figure out which is left and right for making the proper connections. The reader will learn a technique for determining the left and right shoulder servos. Follow along with The Robot Program Episode 004: Identify JD Shoulder Servos. View the video episode here: <https://www.ez-robot.com/Tutorials/Lesson/84>

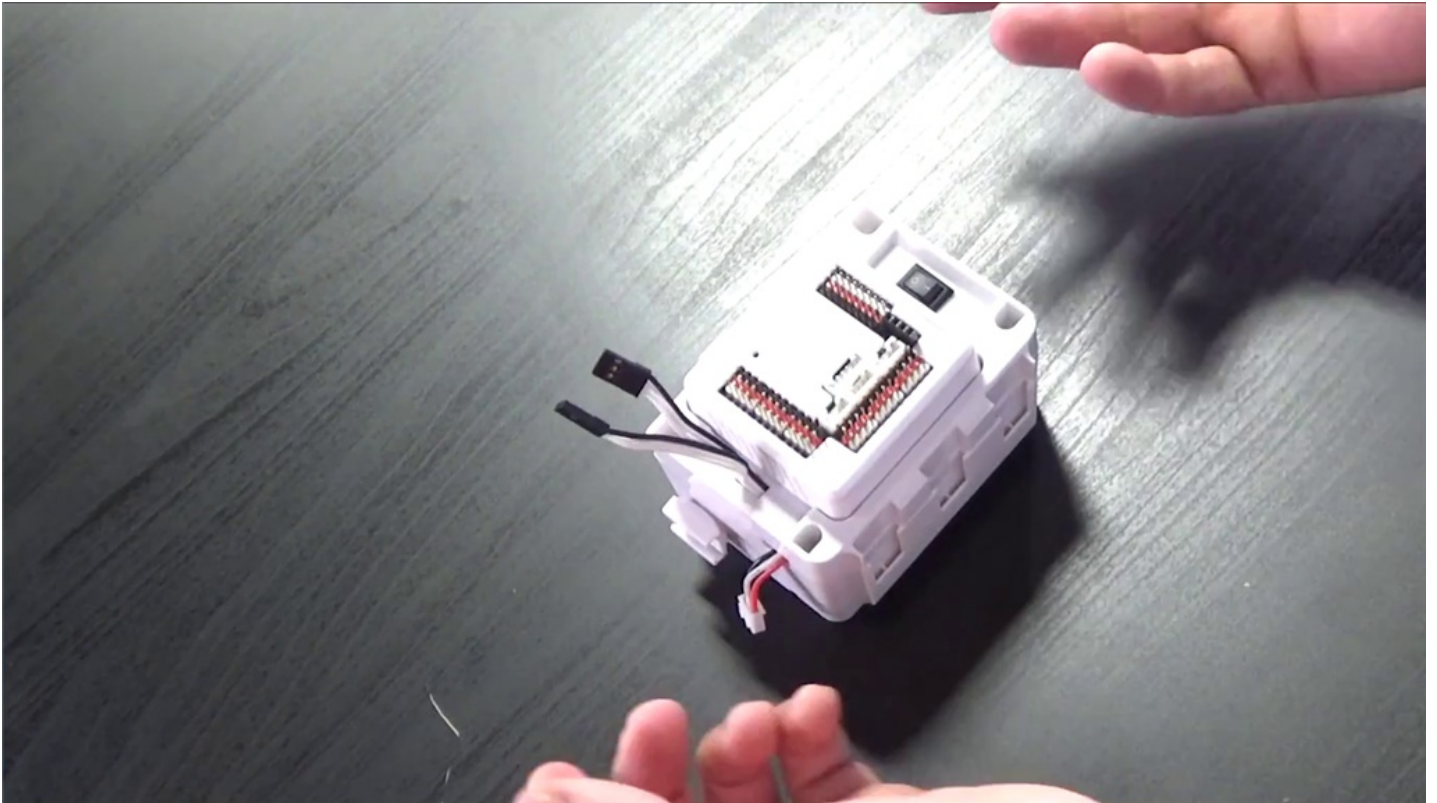
Last Updated: 6/12/2018

## Professor E's Overview

This lesson outlines the steps for determining which shoulder servo is right and which shoulder servo is left. This tutorial is only necessary if the identifying servo stickers have fallen off.

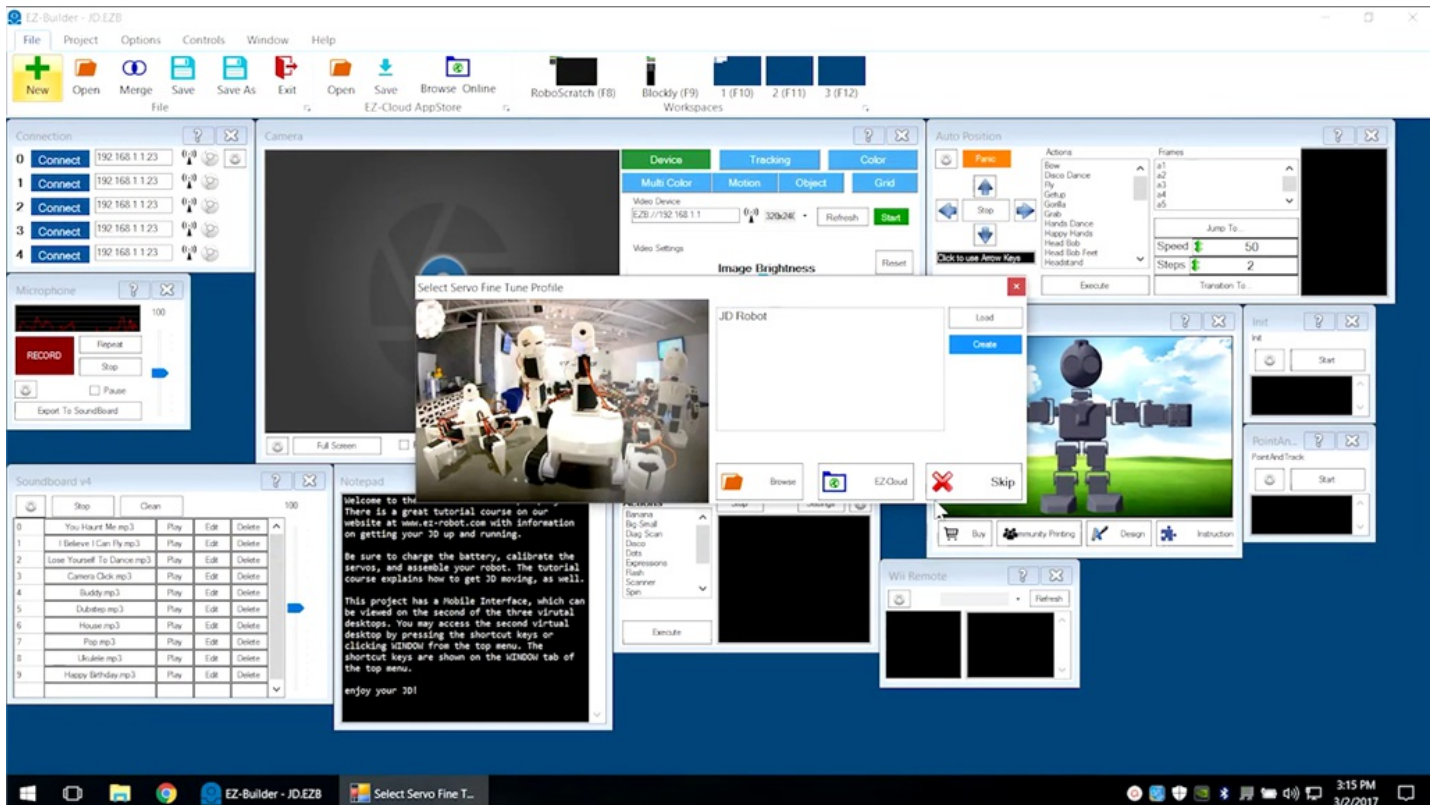
**Right Shoulder Servo (D2)** and **Left Shoulder Servo (D3)** should be connected in a specific way. Use the **Horizontal Servo** control to identify which servo moves when the cables are connected to each port.

Follow along to identify the **JD Shoulder Servo Cables**.



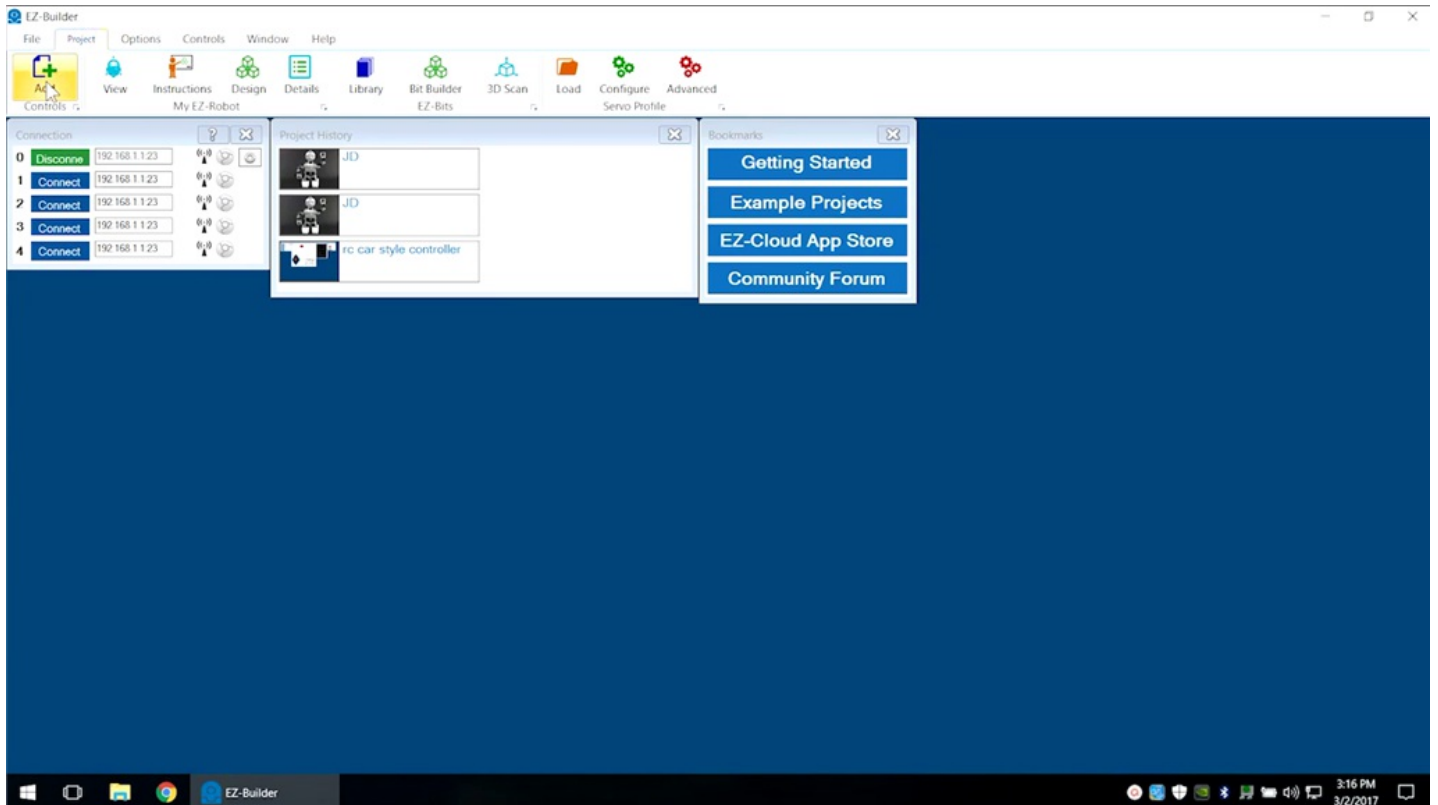
# Step 1

Close out of current **Build Screen**. Select **New** button to open a **New Project**.



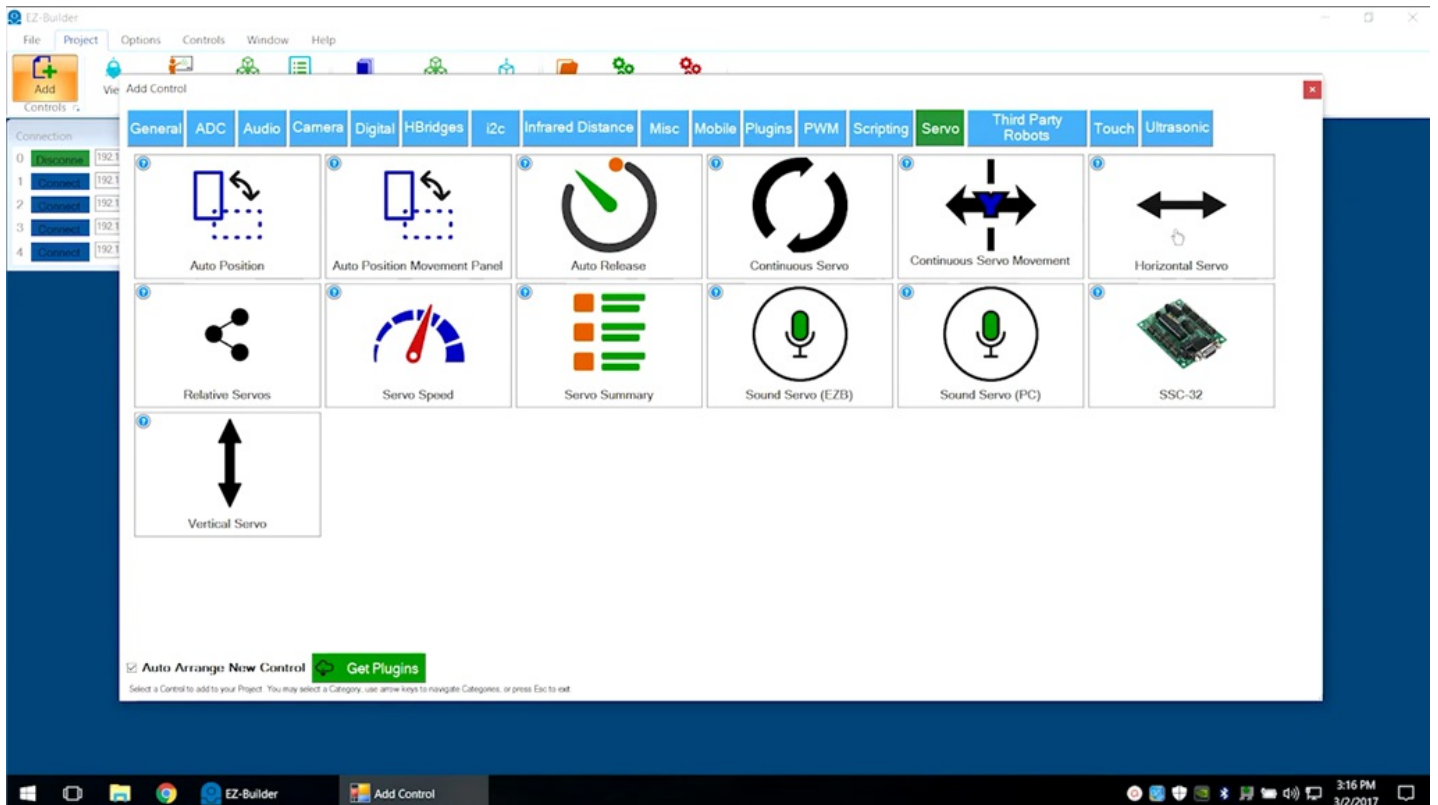
## Step 2

Power on the **EZ-B** controller. Connect to the **EZ-B v4** Wi-Fi connection. Press the **Connect** button and listen for the chime.



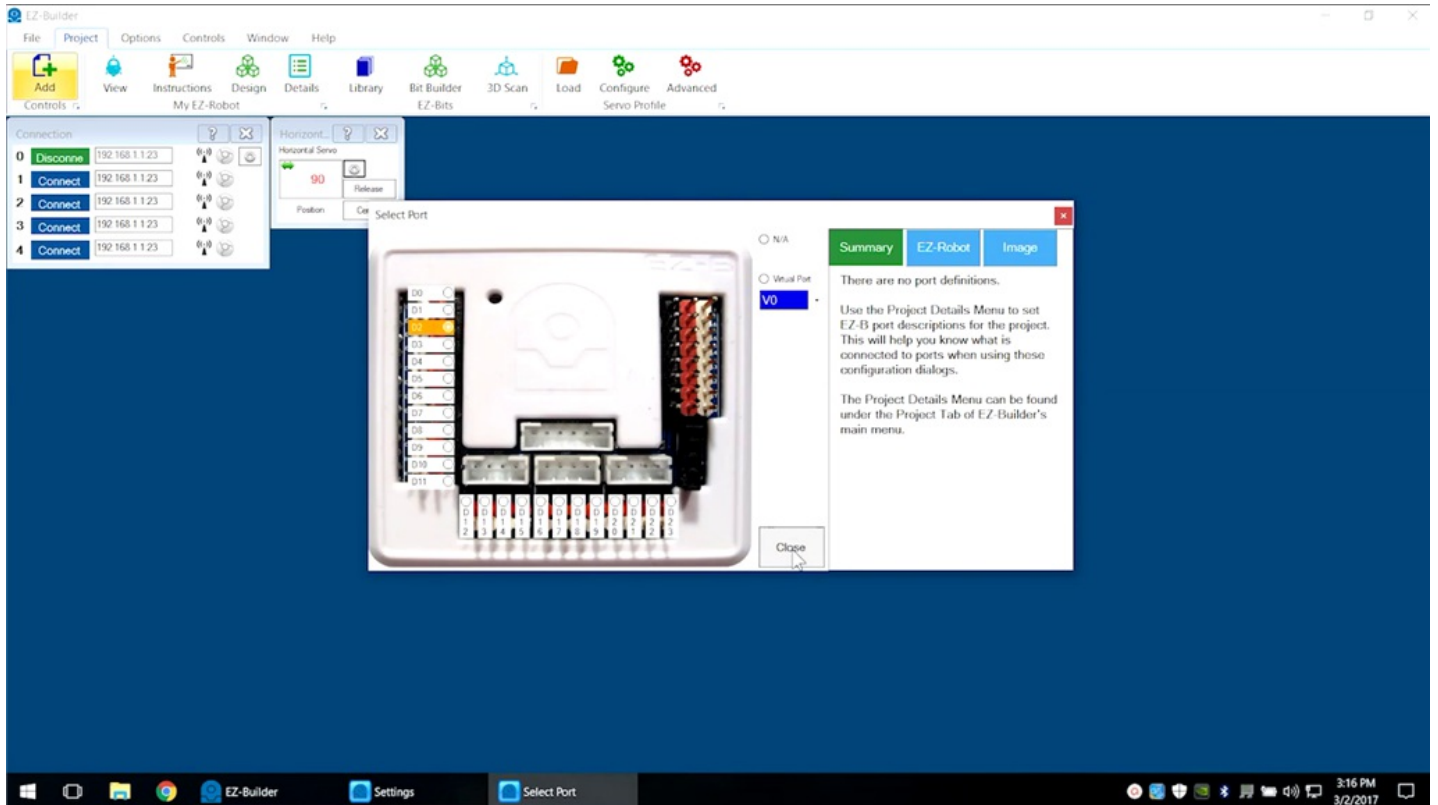
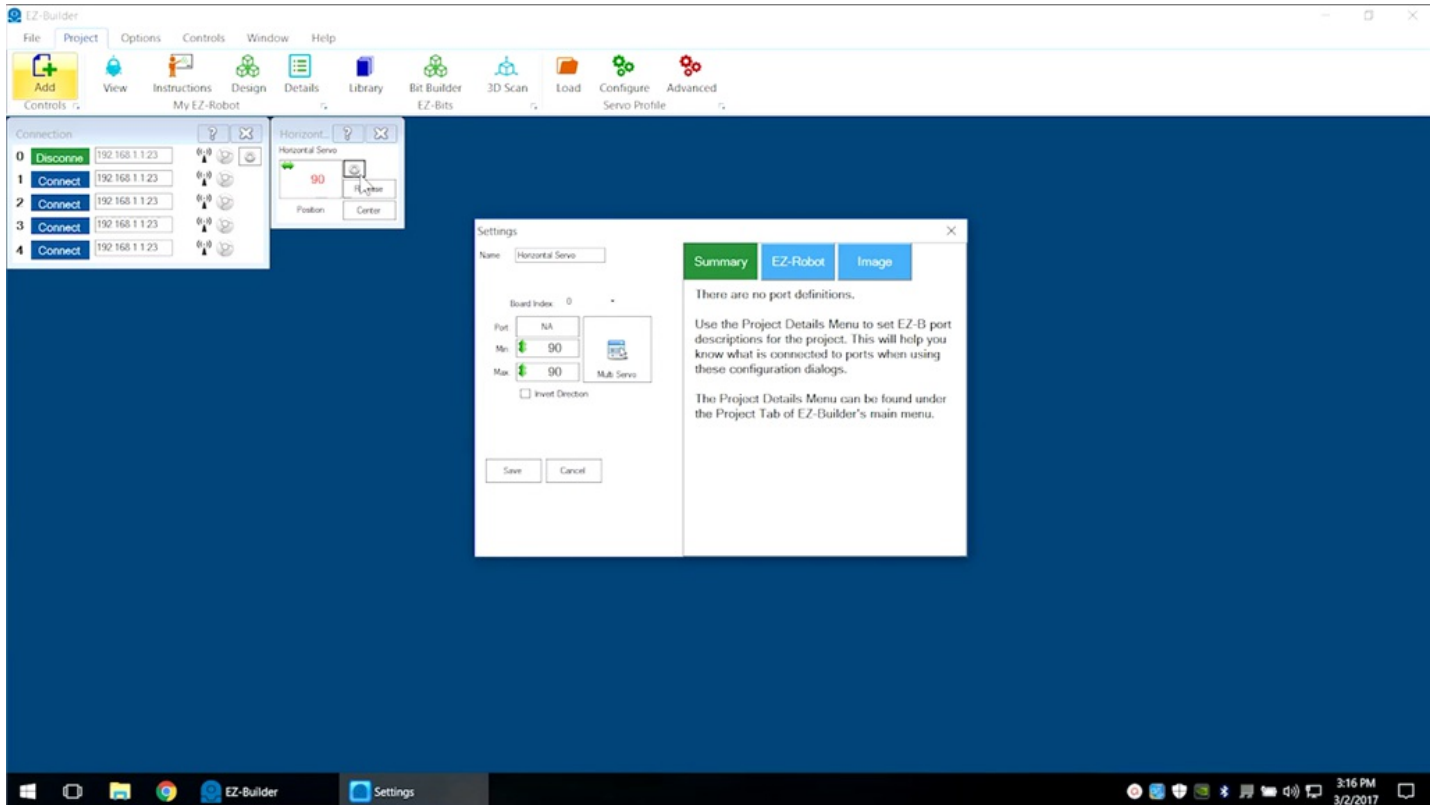
# Step 3

Select **Project** > **Add Control** > **Servo** > **Horizontal Servo**.



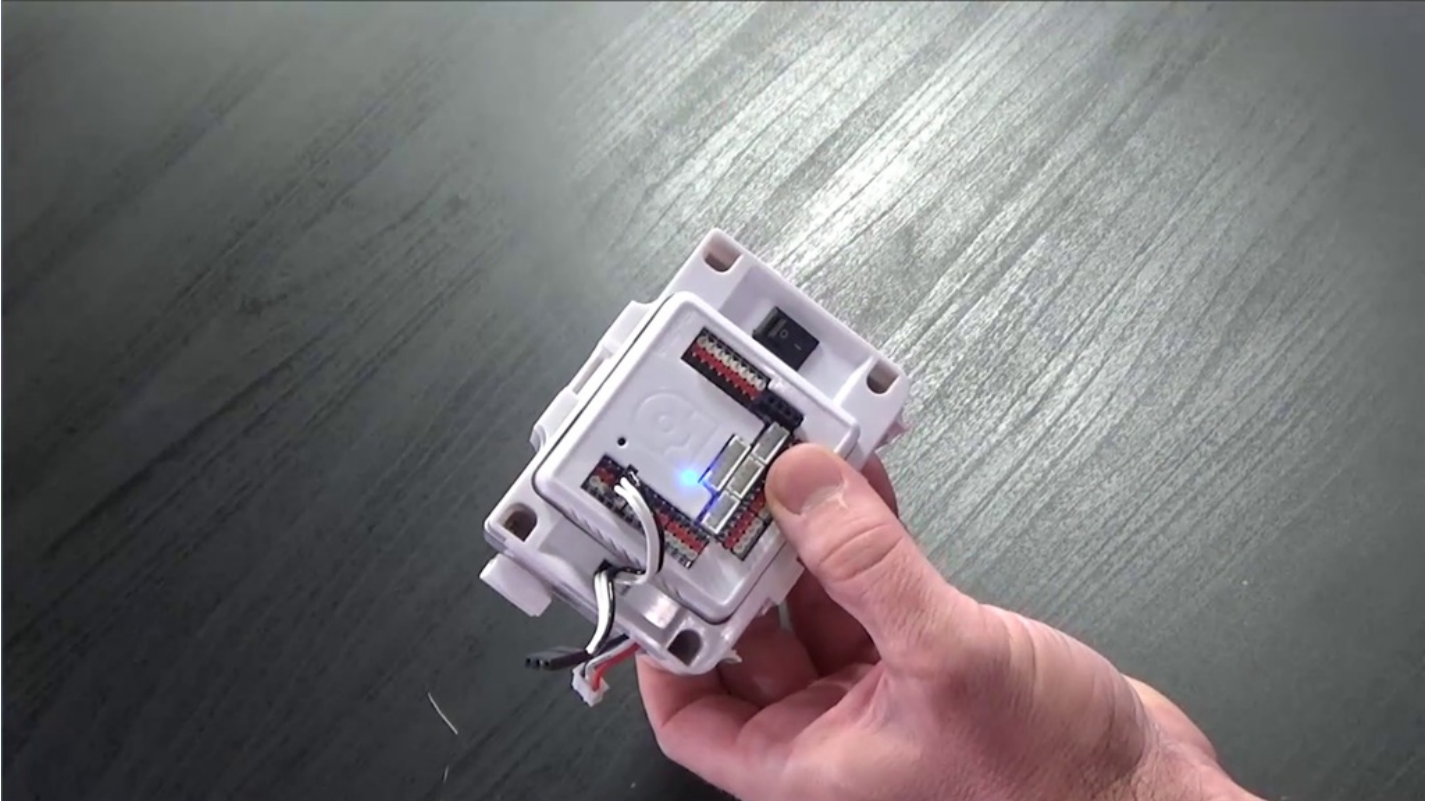
# Step 4

Click on the **Gear Icon** and select port **D2**.



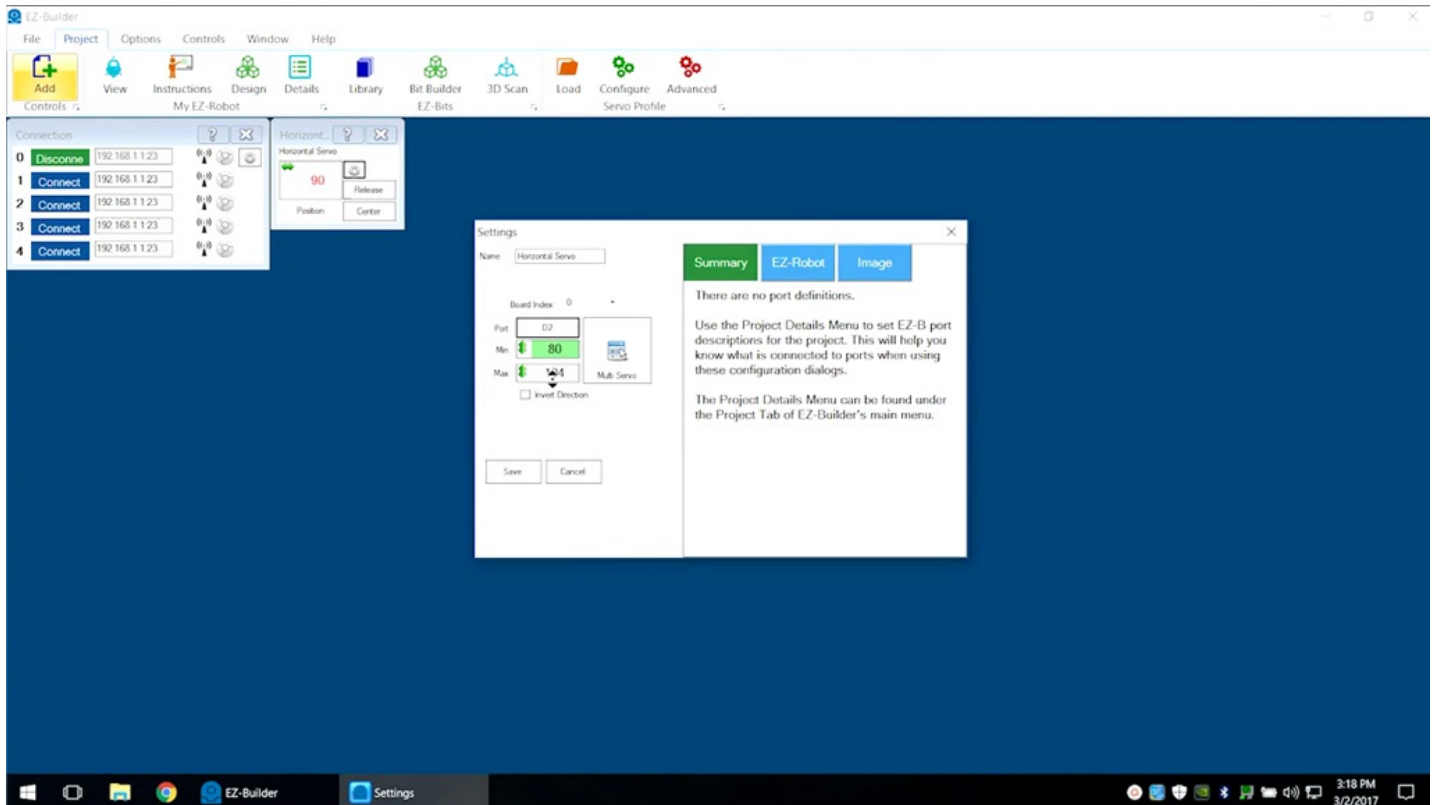
## Step 5

Check the **Getting Started Guide** to identify **D2** and connect one of the cables.



## Step 6

Use the green arrows to change the **D2** port position. If servo moves, label it as **Right Shoulder Servo**. If not, try again with other cable.





## Step 7

Repeat with **D3** and the remaining cable. Label as **Left Shoulder Servo**.



## Step 8

Clearly mark the cables for future reference. Exit **Project** (no need to save) and resume building in **Episode 002**.

